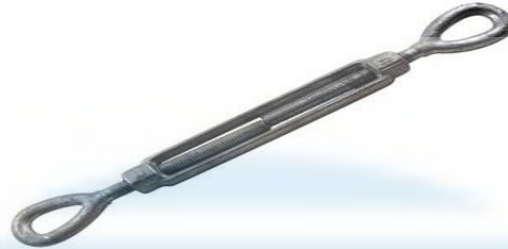




- B-21, Bhan Nagar, Queens Road, Jaipur-302021
- Website: www.aumshivay.com, www.omengineering.in
- E-mail: admin@aumshivay.com

Turn Buckles (Eye & Eye)



Eye & Eye Turn Buckles; Drop Forged Eye & Eye Turn Buckles consists of two threaded eye bolts, one screwed into each end of a small metal frame, one with a left-hand thread and the other with a right-hand thread. These turn buckles are used for adjusting the tension or length of ropes, cables, tie rods, and other tensioning systems. Their End fittings are Quenched and Tempered, bodies are heat treated by normalizing Hot Dip Galvanized Steel, Turnbuckle eyes are forged elongated, by design, to maximize easy attachment in system and minimize stress in the eye.



Thread Diameter and take up		Working Load Limit (Ton)	Weight Each (Kg)	A	Dimensions (mm)							
(in.)	(mm)				J Open	K Closed	M Open	N Closed	R	S	X closed	BB
3/8 x 6	9.53 x 152	0.54	0.34	9.53	444	292	461	309	28.5	13.5	64	152
1/2 x 6	12.7 x 152	1	0.73	12.7	485	332	507	355	36.6	18.3	82	152
5/8 x 9	15.9 x 229	1.59	1.42	15.9	677	449	703	475	44.5	22.2	99.1	229
5/8 x 12	15.9 x 305	1.59	1.59	15.9	830	525	856	551	44.5	22.2	99.1	305
3/4 x 12	19.1 x 305	2.36	2.46	19.1	873	569	905	600	53	25.4	119	305
3/4 x 18	19.1 x 457	2.36	3.29	19.1	1178	721	1210	752	54	25.4	119	457
7/8 x 12	22.2 x 305	3.27	3.67	22.2	897	592	935	630	60.5	31.8	130	305
7/8 x 18	22.2 x 457	3.27	4.51	22.2	1202	745	1240	783	60.5	31.8	130	457
1 x 12	25.4 x 305	4.54	5.41	25.4	964	660	1015	704	76	36.6	162	305
1 x 18	25.4 x 457	4.54	6.35	25.4	1269	812	1314	857	76	36.6	162	457
1 x 24	25.4 x 610	4.54	7.82	25.4	1574	965	1619	1009	76	36.6	162	305
1 1/4 x 18	38.1 x 457	6.89	10.4	31.8	1329	872	1386	929	90.5	46	196	457
1 1/4 x 24	31.8 x 610	6.89	12.3	31.8	1634	1024	1691	1081	90.5	46	196	610
1 1/2 x 18	38.1 x 457	9.71	14.1	38.1	1384	927	1448	991	103	54	219	457
1 1/2 x 24	38.1 x 610	9.71	17	38.1	1689	1080	1753	1143	103	54	219	610
1 3/4 x 18	44.5 x 457	12.7	23.8	44.5	1457	1000	1534	1077	117	60.5	254	457
1 3/4 x 24	44.5 x 610	12.7	26.3	44.5	1762	1153	1839	1229	117	60.5	254	610
2 x 24	51.0 x 610	16.78	38.7	51	1923	1313	2011	1402	146	68.5	333	610
2 1/2 x 24	63.5 x 610	26.22	65	63.5	1997	1387	2099	1489	165	79.5	350	610
2 3/4 x 24	70.0 x 610	34.02	88	70	2057	1448	2172	1562	178	82.5	387	610





AUMSHIVAY ENGINEERING PRIVATE LIMITED

- B-21, Bhan Nagar, Queens Road, Jaipur-302021
- Website: www.aumshivay.com, www.omengineering.in
- E-mail: admin@aumshivay.com

A. Features:

- Working Load Limit Capacity is 0.54 Ton to 34 Ton.
- Turnbuckle eyes are forged elongated, by design, to maximize easy attachment in system and minimize stress in the eye.
- Body has UNC threads.
- TURNBUCKLES RECOMMENDED FOR STRAIGHT OR IN-LINE PULL ONLY.
- Lock Nuts available for all sizes.
- Comprehensive end fitting data provided.
- Proof Load is 2 times the Working Load Limit and Ultimate Load is 5 times the Working Load Limit.

TM

KRISTAN

