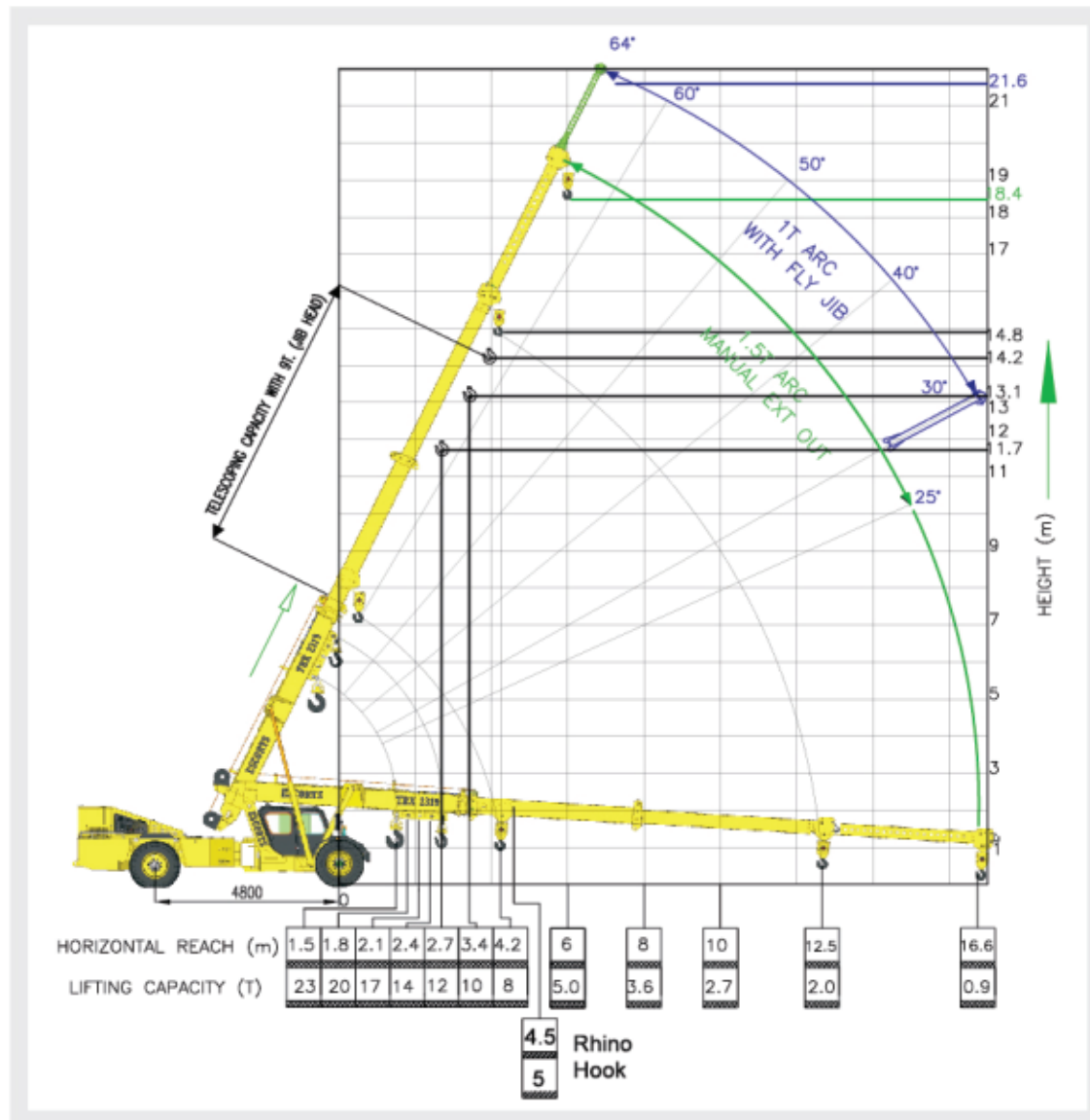


# TRX-2319 Load Chart



Rated loads are calculated for operation on levelled surface

The information contained in this folder is intended to be of general nature only. We reserve the right to change specifications without notice. All dimensions and weight are variable within +/- 5%.

# TRX-2319



Max load lifting capacity 23 T

Max boom height 22 m with fly jib

Max horizontal reach 16.6 m

Equipment monitoring system

Auto leveling hook block

Safe load indicator

Rear view camera

Creep speed - 1.3 km/h

## Mighty Mascular Machine



**Escorts Construction Equipment:** Plot No.- 219, Sector-58, Ballabhgarh-121 004, Distt.- Faridabad, Haryana (INDIA)  
 Tel.- 0129- 2306574/2306598/2306571 Fax- 0129- 2306572  
 Toll Free No.- 1800- 180- 4488 (Timings: 9.30 am - 6.00 pm, Monday to Friday)  
 E-mail- ece.marketing@escorts.co.in Website- www.escortsgroup.com

Accessories as shown in the picture may not be the part of standard fitment and are subject to change without prior notice.

Hub/Dec 2018

## Specification

### Rated Capacity

23 T @ 1.5 m radius from the center of front wheel  
0.9 T @ 16.6 m from the center of front wheel

### Engine

Make & Model VOLVO EICHER make Model E - 683 TCI,  
Turbo Charged Water Cooled Diesel Engine,  
developing 137 HP @ 2200 RPM

### Transmission

Drive 2 Wheel drive  
Type Synchromesh gear box with auxiliary gear box  
Travel Speeds Speed 12 forward and 2 reverse  
40 Kmph (unladen)  
Clutch Single, Dry type friction clutch plate  
Gradeability 35% unladen

### Steering (Fully powered orbital steering with twin double acting rams)

Type Articulated power steering, through steering wheel  
Articulation Upto 35° on either side  
Turning Radius 8.5 m approx.

### Brakes

Rear Wheel Air operated brakes on rear axle  
Front Wheel Pneumatically assisted hydraulic brakes  
Parking Spring loaded brake, Air-released on rear axle

### Tyres

Front 12.00 x 24 - 20 PR (Four Nos.)  
Rear 17.5 x 25 - 20 PR (Two Nos.)

### Track

Front 2150 mm (Center of twin wheels)  
Rear 2000 mm (Center of wheels)  
Wheel Base 4800 mm

### Axles

Front Rigidly mounted on front frame  
Rear Drive axle, mounted on semi elliptical springs

### Boom

Telescoping Four part boom  
Three part hydraulically powered & fully  
synchronised 4<sup>th</sup> part power extended & manually  
Pinned for safety  
(Use 6 Fall when mechanical extension is retracted)  
(Use 4 Fall when mechanical extension is extended)  
Derricking Through double acting jacks

### Hoist Mechanism

Hoist Hydraulic winch with six/ four falls rope dia 13 mm

### Hydraulic System

Craning & Steering Pump Tandem vane pump

### Control Valve

Proportional control valve hydraulically actuated through joy stick  
2 spool control valve for outrigger jacks

### Electrical System

Type 24V DC negative earth

### Capacities

Fuel tank 200 ltrs.  
Hydraulic tank 170 Ltrs.

### Operating Weight

17685 Kg

### Axle Loading

Rear Axle 9850 Kg  
Front Axle 7835 Kg

### Overall Dimensions

Height 3100 mm  
Width 2500 mm  
Length 11010 mm

### Safety System

Safe load Indicator with hydraulic cut off  
Safety brakes on hoist  
Hose protection failure device  
Rope compensating snatch block  
Equipment Monitoring System  
Rear View Camera with LCD

### Standard Accessories

All weather cabin  
Mobile charger  
Rear view mirror  
Turn & reverse lamp

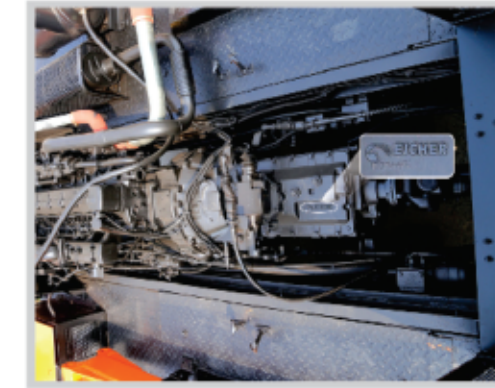
### Optional Accessories

Fly jib 2.6 M length	Tyre guard
Air conditioned cabin	Fire extinguisher
Rhino hook	

## Features



Optimized Geometry - Centrally positioned and lower centre of gravity with structural rigidity makes the machine stable.



Powered by 137 hp engine with 12 F & 2 R Speeds



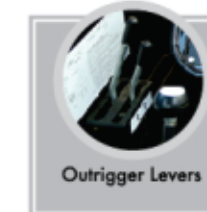
Rear view camera to improve rear visibility with LCD in cabin



Mobile Charging Unit



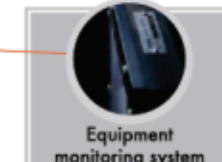
Joystick for ease of operations



Outrigger Levers



Cabin Interior



Equipment monitoring system



Hydraulic Winch (Reputed make) High on performance & low on maintenance. 6 fall snatch block with line pull of 2.5 T.



Front Mounted Cabin for Better visibility & control of loads even under articulation.

### Notes:

- Maximum load lifting capacity : 23 T
- Maximum boom height : 19 m/ 22 m with fly jib
- Maximum horizontal reach : 16.6 m
- 12 T can be lifted to an under hook height of 11.7 m
- 8 T can be lifted to an under hook height of 14.8 m
- Telescopic Capacity (Laden) of snatch block - 9 T
- Tyres to be inflated with recommended air pressure  
- Front tyres (Dual) - 7 bar (Air Pressure)  
- Rear tyres (Single) - 7 bar (Air Pressure)
- Travel speed with load (Creep) - Not to exceed 2 km/hr
- Weight of chains, slings and tackles to be considered extra