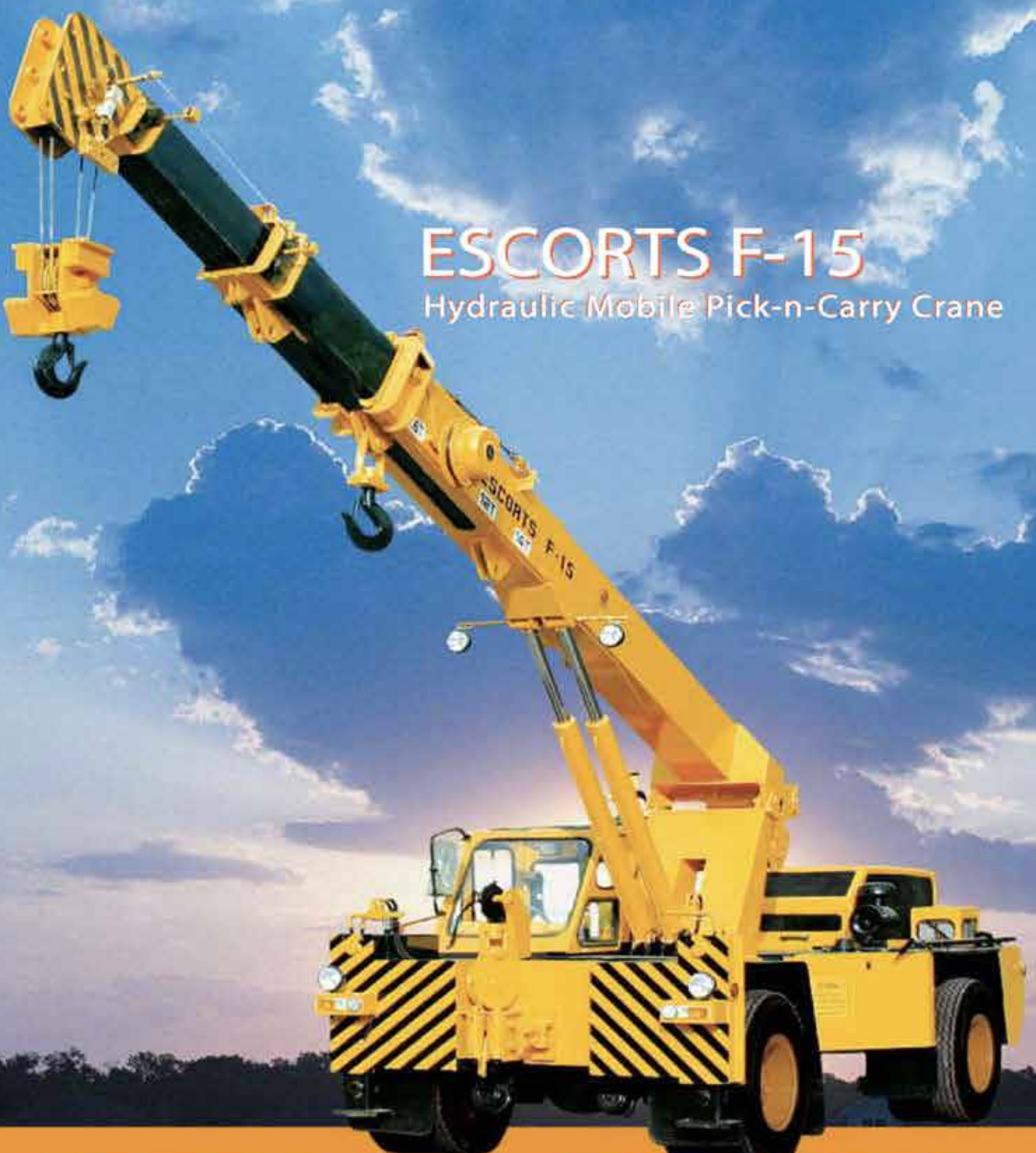


ESCORTS F-15

Hydraulic Mobile Pick-n-Carry Crane



- Travel Long Distances on own Power
- Boom Height with Flyjib: 21m
- Heavy Duty Hoist Winch
- Front Mounted Cabin with Steering Wheel
- Slotted Boom with Self Compensating Snatch block
- New Technology Control Valve for Precision Handling
- 4 Wheel/ 2 Wheel Drive selector
- Dragging Winch with Outriggers (Optional)
- Safe Load Indicator with Hydraulic cutoff (Optional)

SPECIFICATIONS F-15

Rated Capacity

14 tonne at	1.50 m radius
900 Kg at	15.80 m radius
Max hook height	17.60 m

Vehicle Performance

Speed	max 40 kmph
Gradeability	40% unladen

Drive

4 wheel drive

Engine

Diesel engine of KOEL make, Model 4R 1040T Turbo charged water cooled, developing 110 hp @ 2500 rpm or equivalent engine.

Transmission

Synchromesh gearbox with auxillary gearbox
Speeds-8 forward and 2 reverse

Clutch

Single, dry type friction clutch plate

Brakes

Service: Fully air operated 'S' cam dual circuit brakes on front & rear axles
Parking: Air operated, spring actuated fail safe brakes

Axles

Front - rigidly mounted
Rear - mounted with two semielliptical springs

Tyres

8 nos. - 11x20 - 16 PR

Hydraulic system

Main pump of 46 cc/rev,
Control Valve - 3 spool double acting with a built in relief & auxillary valves

Electrical System

24 V, DC

Steering

Full power orbitrol with twin hydraulic double acting rams 40° articulation on either side

Boom

4 part boom, 3 part hydraulically powered & fully synchronised. 4th part power extended and manually pinned for safety

Hoist

Hydraulically operated with 4 falls
Built in safety brakes

Wheel Base

3.95 m

Dimensions

Overall length	9725 mm
Overall width	2450 mm
Overall height	3215 mm

Wheel Track

Front	1825 mm
Rear	1825 mm

Axle Loading

Front Axle	6315 kg
Rear Axle	9000 kg
Total	15315 kg

Turning Radius

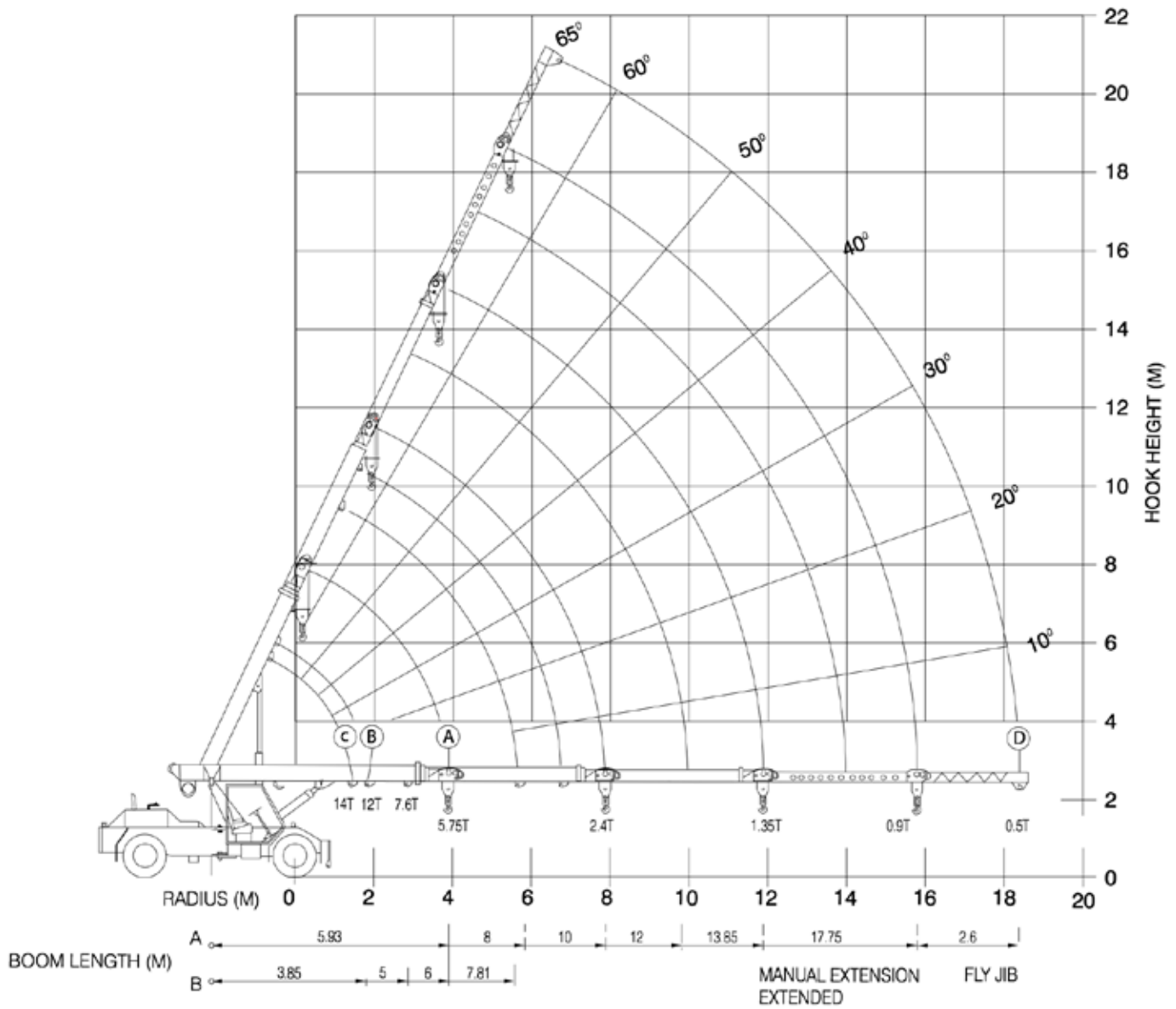
7.2 m

Standard Accessories

All weather cabin with unrestricted visibility

Optional Accessories

- 2.6 m fly jib
- Spare wheel
- Air conditioned cabin
- Safe load Indicator with Hydraulic Cutoff
- RHINO Hook
- Man carrying basket (275 kg)
- Additional cabin
- 4x2 Wheel Drive
- Outriggers
- Dragging Winch



RADIUS (M)	(A)					
	BOOM LENGTH IN METRES - MANUAL EXTENSION RETRACTED					MANUAL EXTENSION EXTENDED
	5.93	8	10	12	13.85	
2	7500	7500	7500			
3	7500	7500	6900	5200		
4	5750	5700	5070	4500	3970	
5		4400	4760	4000	3460	1680
6		3600	3525	3475	3100	1575
7			2900	2900	2750	1475
8			2400	2478	2400	1400
9				2130	2080	1320
10					1775	1250
11					1550	1180
12					1350	1135
13						1110
16						900
18						

(B)			
PIVOT TO INNER LUG 1ST JIB EXTN. MANUAL EXTN. MANUAL EXTN. RETRACTED			
3.85	5	6	7.81
12000	11000	11000	10550
	7000	7000	6700
		4800	4750
			3570

(C)	
14T LUG	
BOOM FULLY RETRACTED	
RADIUS (M)	S.W.L (KG)
1.5	14000

RADIUS (M)	(E)			
	BOOM PIVOT TO OUTER LUG 1ST JIB EXTN. MANUAL EXTN. RETRACTED			
	4.97	6.5	7.5	8.93
2	11000	10500	10000	7500
3	7600	7400	7300	6000
4		5000	4900	4800
5			3800	3700
6				3000
7				2300

RADIUS (M)	(D)
	FLY JIB (BOOM FULLY EXTENDED)
6.4	750
8.0	750
10.9	700
13.5	650
15.6	600
17.1	550
18.0	500
18.4	500

- Radius is the horizontal Distance Measured from the centre of front wheel to the load point
- S.W.L. are based on 75% stability & strength
- S.W.L. are based on firm level ground with tyres 11x20 - 16 ply rating inflated to 115 PSI. Weight of hooks, blocks, slings & chain etc. included
- Lift & Carry - the S.W.L. shall be carried with the minimum boom length & as close to the ground as possible at speeds not in excess of 2 kmph.
- Boom head mounted RHINO hook capacity - 6000 kg

All dimension are in mm and are variable within ± 5%

