

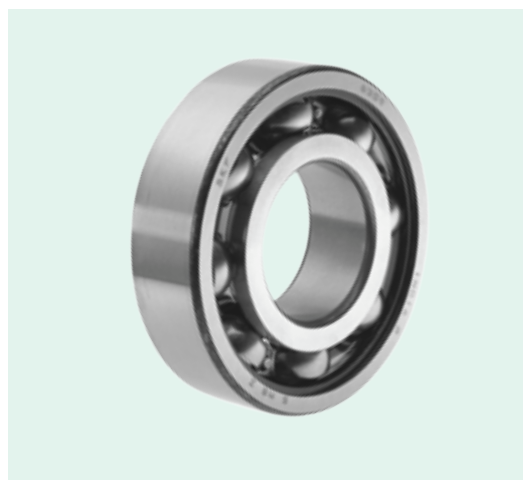
Maximum retail pricelist for bearings

Effective from 1st April, 2018

* This price list supercedes all earlier pricelists



Winners
rely on
SKF



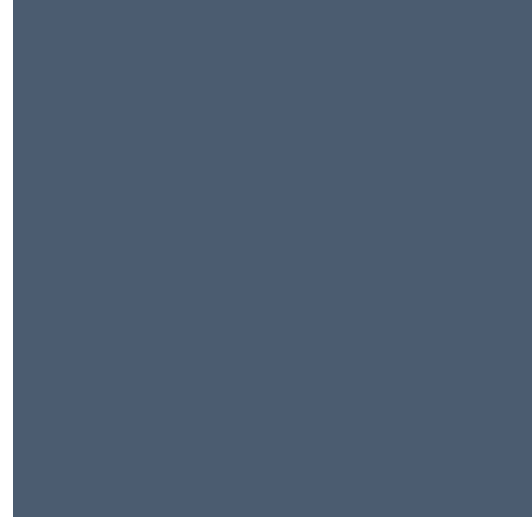
Install confidence, install SKF!



About SKF

The SKF Group has globally over 100 manufacturing sites worldwide and sales companies in 70 countries and representation in 130 countries, SKF is a truly international corporation. In addition, our global distribution system with distributors and dealers in over 15,000 locations around the world and an e-business marketplace put SKF close to customers for the supply of both products and services. In essence, SKF solutions are available wherever and whenever customers need them. SKF in India has a pan India footprint comprising

of six manufacturing facilities, six offices, over 300 distributors and an employee base of over 3,300 dedicated professionals. SKF Vehicle Service Market deals with the aftermarket for cars, two wheelers, three wheelers and commercial vehicles across India. As a knowledge engineering company, SKF is much more than a components supplier — our engineers fall back on a century of SKF expertise to improve overall system reliability, safety and efficiency.



What do today's customers want in a vehicle maintenance?

Higher fuel efficiency. A quiet, comfortable ride. No downtime. Less maintenance. And an array of active and passive safety features.

SKF products are designed to meet such customer requirements and offers a wide range of bearings that are the best performance fit for your application. With more than 100 years of experience, SKF not only provides components but a complete support to our customers by helping them address their critical issues - reliability, efficiency and safety.

Supplementary designations

N	Snap ring groove in outside cylindrical surface of the outer ring.
NR	As N, but with snap ring.
RS1	Contact type rubber seal with sheet steel reinforcement, at one side of the bearing.
2RS1	RS1 seals at both sides of the bearing.
RZ	Low friction seal of synthetic rubber with sheet steel reinforcement at on side of the bearing.
2RZ	RZ seals at both sides of the bearing.
Z	Shield (non-contact type) at one side of the bearing.
2Z	Z shields at both sides of the bearing.
ZN	Z shield at one side of the bearing and snap ring groove in outer ring.
ZNR	As ZN, but with snap ring.
2ZNR	As 2ZN, but with snap ring.
TN9	Glass fibre reinforced polyamide 6,6 window-type cage.
HN3	Stands for carbonitrided bearing. Performance of standard through hardened bearings can be drastically improved by the use of a surface heat treatment called carbonitriding. Carbonitriding is a high temperature heat treatment, which involves the diffusion of carbon and nitrogen into the surface of the steel. Deep Groove Ball Bearings (DGBB) with carbonitrided inner rings have been found to be twice as resistant compared to regular hardened DGBBs.
H	Stands for radial clearance in the upper half of the same clearance bracket e.g. 6002/C3H, here clearance for C3 is between 8 to 23 micron but for C3H clearance is between 15 to 23 micron. CNL Stands for radial clearance in the lower half of the same clearance bracket e.g. 6304/CNL, here clearance for normal bearing is between 5 to 20 micron but for CNL clearance is between 5 to 14 micron.
CNP	Stands for radial clearance which is a combination of the upper half of normal (CN) and the lower half of C3 range e.g. 6305/CNP, here the clearance for normal bearing is between 5 to 20 micron and 13 to 28 micron for C3. Hence, CNP clearance will be 13 to 21 micron.
VB133	Chamfer in bore deviating from basic bearing.
VQ091	Close bore diameter tolerance.
VB524	Chamfer in bore and outer diameter deviating from basic bearing.
VQ213	Special tolerance for bearing vibration & peaks.
MTF7&9	Here MT stands for medium temperature grease and F7 & F9 gives the quantities of grease.
GJN7	Here GJN stands for high temperature grease and 7 for grease quantity.
J	Pressed steel cage.
Q	SKF TQ Line bearings come with a logarithmic contact profile that provides for optimum stress distribution over roller/raceway contacts. Special design of sliding surfaces of guide flange and large roller ends considerably promotes lubricant film formation at roller end/flange contacts. Resulting benefits include increased operational reliability and reduced sensitivity to misalignment.

Internal clearance

The bearing internal clearance is defined as the total distance through which one bearing ring can be moved relative to the other under zero measuring load. Movement in the radial direction is called radial internal clearance; axial movement, axial internal clearance. The internal clearance is standardized.

Rolling bearings are delivered with different internal clearance. The internal clearance will vary from bearing type to bearing type. The most common clearance is NORMAL (with no suffix).

- C1 = Bearing internal clearance smaller than C2
- C2 = Bearing internal clearance smaller than normal
- C3 = Bearing internal clearance greater than normal
- C4 = Bearing internal clearance greater than C3
- C5 = Bearing internal clearance greater than C4

Why internal clearance?

1. In order to fit a bearing tightly on a shaft it is necessary that the shaft is slightly larger than the bore of the inner ring. When the bearing is mounted, the inner ring will be expanded and consequently the space available for the rolling elements will be reduced. The reduction in space available for rolling elements when the bearing is mounted is accommodated by internal clearance
2. Steel will expand with increased temperature. In operation the temperature of the various parts of a bearing will not remain uniform and resulting in varying degrees of expansion, which is compensated by the internal clearance. The internal clearance required is dependent upon the mounting fit and the operating conditions. In case of doubt a bearing with greater clearance shall always be selected.

For more details/information, write to:

Marketing Department,
Vehicle Service Market,
SKF India Limited,
Chinchwad Pune 411 033
Phone: +91-20-6611 2500
Fax: +91-20-6611 2440
Helpline: 1800 222 007 (Toll Free from MTNL/BSNL landlines)
or +91-20-6633 7777 (normal STD charges apply)
Website: www.skfindia.com

This edition of Maximum Retail price of SKF products are as on 1st April 2018. For latest information please contact your nearest Automotive Distributor. (Please visit our website to locate a Distributor near you.) M.R.P. given in this list are recommended prices, retailers/Distributors are free to sell below the M.R.P.

The contents of this publication are the copyright of the publisher and must not be reproduced (even extracts) unless permission is granted. Every care has been taken to ensure the accuracy of the information contained in this publication but no liability for any loss or damage whether direct, indirect or consequential arising out of the use of the information contained herein.



Designation	MRP (₹)	Designation	MRP (₹)	Designation	MRP (₹)	Designation	MRP (₹)
Deep groove ball bearings		6004	192	6200-2RS1	177	6204-Z	227
16007	296	6004/C3	192	6200-2RS1/C3	177	6204-Z/C3	227
16007/C3	296	6004/HN3	222	6200-Z	137	6204-Z/HN3	227
16008	405	6004-RS1	224	6200-Z/C3	137	6204-Z/HN3C3	227
1838001/C3	274	6004-RS1/C3	224	6200-2Z	153	6204-2RZ	270
1838001/C4	274	6004-2RS1	249	6200-2Z/C3	153	6204-2RZ/C3	270
1888180	1177	6004-2RS1/C3	249	6201	103	6204-2RZN/C3	270
1888451	1129	6004-Z	206	6201/C3	103	6204-2Z	243
306445 C	883	6004-Z/C3	206	6201-RS1	125	6204-2Z/C3	243
6000	134	6004-2Z	222	6201-RS1/C3	125	6204/D8	208
6000/C3	134	6004-2Z/C3	222	6201-2RS1	148	6205	279
6000/C3D8VG043	134	6004/CNHD8S0VG043	192	6201-2RS1/C3	148	6205 NR/C3	283
6000-2RS1	182	6005	216	6201-2RS1/C3LLHT23	148	6205/C3	279
6000-2RS1/C3	182	6005/C3	216	6201-Z	116	6205 E/HN3VK374	283
6000-2RS1/C4HTF7	182	6005-RS1	241	6201-Z/C3	116	6205/HN3	283
6000-Z	144	6005-RS1/C3	241	6201-2Z	126	6205-RS1	316
6000-Z/C3	144	6005-2RS1	274	6201-2Z/C3	126	6205-RS1/C3	316
6000-2Z	150	6005-2RS1/C3	274	6202	114	6205-2RS1	349
6000-2Z/C3	150	6005-Z	233	6202/C3	114	6205-2RS1/C3	349
6000-2Z/C4	150	6005-Z/C3	233	6202/HN3C3	115	6205-Z	300
6001	131	6005-2Z	246	6202-RS1	142	6205-Z/C3	300
6001/C3	131	6005-2Z/C3	246	6202-RS1/C3	142	6205-Z/HN3C3H	300
6001-RS1/C3	165	6006	279	6202-RS1/MT33F9VG043	142	6205-2RZ	333
6001-2RS1	191	6006/C3	279	6202-2RS1	158	6205-2RZ/C3	333
6001-2RS1/C3	191	6006-RS1/C3	297	6202-2RS1/C2LHT23	158	6205-2Z	321
6001-2RSH	191	6006-2RS1	334	6202-2RS1/C3	158	6205-2Z/C3	321
6001-Z	145	6006-2RS1/C3	334	6202-2RSH/C3	158	6206	420
6001-Z/C3	145	6006-Z	297	6202-Z	128	6206 N	420
6001-2Z	149	6006-2Z	319	6202-Z/C3	128	6206 N/C3	420
6001-2Z/C3	149	6006-2Z/C3	319	6202-2Z	139	6206 NR/C3	420
6001-2Z/GJN	149	6007	296	6202-2Z/C3	139	6206 TN9/C3VQ488	427
6001/HN3C3VG043	131	6007/C3	296	6202-2Z/MT33F9	139	6206/C3	420
6002	149	6007-RS1	338	6202/VG043	136	6206/HN3C3H	420
6002/C3	149	6007-RS1/C3	338	6202/S00VG043	114	6206-RS1	456
6002/C3H	149	6007-2RS1	376	6203	145	6206-RS1/C3	456
6002-RS1	187	6007-2RS1/C3	376	6203/C3	145	6206-2RS1	483
6002-2RS1	204	6007-2Z	370	6203-RS1	165	6206-2RS1/C3	483
6002-Z	161	6010	653	6203-RS1/C3	165	6206-2RS1/C3MT33	484
6002-Z/C3	161	6010/C3	653	6203-2RS1	188	6206-Z	444
6002-2Z	179	6010-2RS1	731	6203-2RS1/C3	188	6206-Z/C3	444
6002-2Z/C3	179	6010-2Z	713	6203-2RS1/C3GJNVP101	188	6206-2Z	476
6003	176	613963/C3	187	6203-Z	158	6206-2Z/C3	476
6003/C3	176	61804/C2LHT23	320	6203-Z/C3	158	6207	414
6003/C3HD8	176	61804/C3	320	6203-2Z	173	6207/D8	414
6003-RS1	183	61805	205	6203-2Z/C3	173	6207/C3	414
6003-RS1/C3	183	61902/C3	229	6204	208	6207/C3D8	414
6003-2RS1	230	61902-Z/C3	229	6204 N	208	6207 N	404
6003-Z	188	61902-2Z	227	6204/C3	208	6207 NR	414
6003-Z/C3	188	61905/C3	246	6204-RS1	240	6207 NR/C3	414
6003-2Z	201	61906/D8S0VB578	289	6204-RS1/C3	240	6207-RS1	444
6003-2Z/C3	201	6200	124	6204-2RS1	270	6207-RS1/MT	462
		6200/C3	124	6204-2RS1/C3	270	6207-2RS1	491
		6200-RS1	158	6204-2RS1N	271		

Designation	MRP (₹)	Designation	MRP (₹)	Designation	MRP (₹)	Designation	MRP (₹)
6207-2RS1/C3	491	6213/C3	1033	6303-2RS1/C3HTF7	304	6307-2RS1NR/C3	737
6207-Z	442	6213-2Z	1086	6303-Z	263	6307-Z	529
6207-Z/C3	442	6213-2Z/C3	1086	6303-Z/C3	263	6307-Z/C3	529
6207-2Z	467	628/D8	131	6303-2Z	277	6307-2Z	550
6207-2Z/C3	467	628-2Z	135	6303-2Z/C3	277	6307-2Z/C3	550
6208	499	629-2RS1	132	6304	210	6307/D8	504
6208/C3	499	629-2Z	113	6304/C3	210	6308	749
6208 N	508	629-2Z/C3	113	6304 N	223	6308/C3	749
6208 N/C3	508	63/28/C3HN3	573	6304 N/C3	223	6308 N	754
6208 NR	526	6300	176	6304-RS1	244	6308 N/C3	754
6208 NR/C3	526	6300/C3	176	6304-RS1/C3	244	6308 NR	778
6208-RS1	547	6300-2RS1	260	6304-2RS1	268	6308 NR/C3	778
6208-2RS1	584	6300-2RS1/C3	255	6304-2RS1/C2LHT23	268	6308-Z	783
6208-2RS1/C3	584	6300-Z	187	6304-2RS1/MTF7	268	6308-Z/C3	783
6208-Z	532	6300-Z/C3	187	6304-2RS1/C3	268	6308-ZN	786
6208-Z/C3	532	6300-2Z	195	6304-Z	232	6308-ZN/C3	786
6208-2Z	559	6300-2Z/C3	195	6304-Z/C3	232	6308-ZNR	813
6208-2Z/C3	559	63006-2RS1/C4500HT	475	6304-2Z	244	6308-2Z	818
6209	603	6301	106	6304-2Z/C3	244	6308-2Z/C3	818
6209/C3	603	6301/C3	106	6305	315	6308-2RZNR/C3	837
6209-2RS1	684	6301-RS1	127	6305/C3	315	6309	1225
6209-2RS1/C3	684	6301-RS1/C3	127	6305/C3H	320	6309/C3	1225
6209-Z	633	6301-RS1/VC5131F9	127	6305 N	317	6309 N	1233
6209-Z/C3	633	6301-RS1/MTF7	127	6305 N/C3	317	6309 N/C3	1233
6209-2Z	670	6301-RS1/MT33F9	127	6305-RS1	347	6309 NR	1271
6209-2Z/C3	670	6301-RS1/C3MTF9	127	6305-2RS1	373	6309 NR/C3	1271
6210	633	6301-RS1/C3VC513F9	127	6305-2RS1/C3	373	6309-RS1	1280
6210/C3	633	6301-2RS1	137	6305-Z	332	6309-RS1/C3	1280
6210 N	637	6301-2RS1/C3	137	6305-Z/C3	332	6309-2RS1	1332
6210 N/C3	637	6301-2RS1/C3VC5131	137	6305-2Z	352	6309-2RS1/C3	1332
6210 NR	665	6301-2RS1/VC5131F7	137	6305-2Z/C3	352	6309-Z	1271
6210-2RS1	843	6301-Z	121	6306	440	6309-Z/C3	1271
6210-2RS1/C3GJN	843	6301-Z/MT33F9	121	6306/C3	440	6309-2Z	1308
6210-Z	673	6301-Z/C3	121	6306 N	441	6309-2Z/C3	1308
6210-ZNBR	993	6301-2Z	127	6306 N/C3	441	6310	1235
6210-Z/C3	673	6301-2Z/C3	127	6306 NR	455	6310/C3	1235
6210-2Z	708	6302	214	6306-RS1/MT	476	6310 N	1241
6210-2Z/C3	708	6302/C3	214	6306-2RS1	504	6310 N/C3	1241
6211	830	6302-RS1	237	6306-2RS1/C3	504	6310 NR	1280
6211/C3	830	6302-RS1/C3	237	6306-Z	459	6310 NR/C3	1280
6211-RS1	883	6302-2RS1	265	6306-Z/C3	459	6310-2RS1	1361
6211-2RS1/HTF7	902	6302-2RS1/C3	265	6306-2Z	476	6310-2RS1/C3	1361
6211-Z	870	6203-2RS1/C3HTF7	188	6306-2Z/C3	476	6310-Z	1304
6211-2Z	903	6302-Z	225	6306-2Z/C3	476	6310-2Z	1324
6211-2Z/C3	903	6302-Z/C3	225	6306/HN3CNP	435	6310-2Z/C3	1324
6212	944	6302-2Z	233	6307	511	6311	1811
6212/C3	944	6302-2Z/C3	233	6307/C3	511	6311/C3	1811
6212-2RS1	1090	6303	244	6307 N	513	6311-2RS1	1844
6212-2RS1/C3	1090	6303/C3	244	6307 N/C3	513	6311-2RS1/HTF7	1933
6212-Z/C3	1056	6303-RS1	276	6307 NR	532	6311-Z	1867
6212-2Z	1068	6303-RS1/C3	276	6307 NR/C3	532	6311-Z/C3	1867
6212-2Z/C3	1068	6303-2RS1	304	6307-RS1/MT	723	6311-2Z	1918
6213	1033	6303-2RS1/C3	304	6307-2RS1	723	6311-2Z/C3	1918

Designation	MRP (₹)	Designation	MRP (₹)	Designation	MRP (₹)	Designation	MRP (₹)
6312	2140	Tapered roller bearings		32305 J2/Q	659	BT1-1066/Q	1281
6312/C3	2140			32307 J2/Q	1024	BT1B 329013 A/Q	485
6312-2RS1	2276	02872/2/02820/2/Q	732	32308 J2/Q	999	HM 212049/011	1987
6312-2RS1/C3	2276	09067/09195/Q	507	32309 J2/Q	1269	HM 903249/2/210/2/Q	1414
6312-Z	2198	15123/15245/Q	501	32911/Q	1105	JLM 710949/910/Q	1152
6312-Z/C3	2198	1988/1922/Q	470	33005/Q	475	LM 11949/910/Q	457
6312-2Z	2245	24780/24720/Q	790	33010/Q	991	LM 29749 F/711/Q	511
6312-2Z/C3	2245	25572/25520/Q	819	33019/Q	2580	LM 29749/710/	
6313	2452	25577/2/25523/2/Q	833	330201/Q	1499	QCL7CVA607	568
6313/C2	2452	25580/25522/Q	795	330356 B/Q (32213)	1829	LM 48548/510/Q	432
6313/C3	2452	25590/2/25520/2/Q	904	330632 C/Q (31312)	2439	LM 501349/310/Q	621
6313-2RS1	2590	25590/2/25523/2/Q	904	33108/U4Q	693	LM 501349/314/Q	781
6313-2RS1/C3	2590	25877/2/25821/2/Q	723	33111/QVB500	1199	LM 603049/011	763
6313-Z	2506	2789/2729/Q	749	33112/Q	1476	LM 603049/012/Q	585
6313-Z/C3	2506	28580/2/28521/2/Q	896	33215/Q	2425	M 12649/610/Q	491
6313-2Z	2558	30203 J2/Q	316	344/332/Q	787	M 802048/011/Q	1171
6313-2Z/C3	2558	30204 J2/Q	352	3585/3525/Q	1218	M 86649/2/610/2/Q	774
6313-2ZNR	2613	30205 J2/Q	375	3780/3720/Q	1357	M 88048/010/Q	757
6313-RS1/C3HTVT193	2468	30206 J2/Q	496	3782/3720/Q	1386	VKT 8001 (30210)	611
QJ 209 MA/C2	1299	30207 J2/Q	541	387/382 A/Q	1058	VKT 8002 (31312 L)	2090
QJ 309/C2	1329	30208 J2/Q	842	395/394 A/Q	1272	VKT 8024 (32005 X)	369
RLS 7	1325	30209 J2/Q	621	395 A/394 A/Q	1246	VKBC 1000 (30213)	1232
VKWM 1944 (BB1-3902)	293	30211 J2/Q	1127	395 S/394 A/Q	1246	VKBC 1007 (32206)	508
VKWM 1945 (BB1-4764 B)	250	30214 J2/Q	1489	39580/W/2/39520/2/Q	1946	VKBC 1002 (32208)	632
VKWM 1946		30215 J2/QCLN	1584	39581/39520/Q	1946	VKBC 1001 (30304)	364
(BB1-4788)	240	30302 J2/Q	355	3982/3920/2/Q	1601	VKBC 1003 (32220)	4107
VKP 63031 (LS 8)	256	30305 C	525	3984/2/3920/2/Q	1472	VKBC 1004 (33210)	1322
VKBC 1006 (MS12)	585	30306 J2/QCLN	616	39585/39520/Q	1281	VKBC 1005 (33211)	1473
VKT 8023 (62/28)	481	30308 J2/Q	872	399 A/394 A/QVB079	1212	VKBC 1009 (33217)	2444
VKT 8065 (6308/C3 RO)	580	30309 J2/Q	1220	418/414/Q	891	VKT 8047 (33209)	750
VKT 8067 (6211/C3 RO)	600	30312 J2/Q	2240	42687/42620	1589	VKT 8061 (32306)	570
		31309 J2/QCLN	1288	42690/42620/Q	1897	VKT 8059 (3659)	440
Imported deep groove ball bearing		31594/2/31520/2	933	462/453 X/VB535	1284	VKT 8004 (32310)	1320
VKEB 61033 (608 2Z)	121	320/32 X/Q	441	47487/47420 X	1545	VKT 8006 (15100S/	
VKT 8016		32004 X/Q	435	482/472/Q	1462	15250X)	466
(6308-2RS1/C3)	900	32006 X/Q	433	497/492 A/Q	2771	VKT 8009 (31885/3120)	756
VKT 8017 (6009-2RS1)	950	32007 X/Q	544	535/532 A	1474		
VKT 8013 (6011-2Z)	1215	32008 X/Q	605	539/532 X	1206	Imported tapered roller bearings	
VKT 8025 (6015)	1800	32010 X/Q	737	566/563/Q	1526	BT1-0523/VU1006	
VKT 8014 (6214)	2213	32012 X/QVB531	1104	567/563	1543	(30307 type)	861
VKT 8015 (6314)	3643	32013 X/QVB533	1173	575/572/Q	1930	BT1-0524/VU1006	
VKT 8018 (6011-2RS1)	1408	32014 X/Q	1371	580/572/Q	1664	(32208 type)	712
VKT 8019 (6011)	1043	32020 X/Q	2306	55200 C/55437/QVE807	2155	BT1-0525/VU1006	
VKT 8020 (6012)	1128	32205 BJ2/Q	436	6379/K-6320/Q	2708	(32209 type)	756
VKT 8021 (6013)	1581	32207 J2/Q	708	683/672/Q	3047	BT1-0526/VU1006	
VKWB 1782		32210 J2/Q	941	687/672/Q	2781	(30210 type)	694
(61903-2RS1)	439	32211 J2/Q	872	72212/2/72487/2/Q	1515	BT1-0528 A/VU1006	
VKT 8022 (6014)	1669	32212 J2/Q (330201/Q)	1499	BT1-0017 A/Q	386	(30216 type)	1765
		32213 J2/Q	1829	BT1-0230/Q	2678	BT1-0530/VU1006	
		32214 J2/Q	1756	BT1-0381/Q	1108	(32219 type)	3837
		32216 J2/Q	2316	BT1-0500/Q	2806		
		32217 J2/Q	3206	BT1-0501/Q	2168		
		32218 J2/Q	4599	BT1-0702/Q	1357		

Designation	MRP (₹)
BT1-0545 A/VU1006 (30212 type)	1058
BT1-0553 A/VU1006 (32220 type)	5033
VKBC 0959 (33207/Q)	1970
VKBC 0960 (33205/Q)	1263
VKBC 0962 (32011 X/Q)	1364
VKBC 0964 (33012/Q)	5909
VKBC 0929 (32215 J2/Q)	1768

Designation	MRP (₹)
VKBC 0957 (497/460 L)	1648
VKBC 0958 (U 399/ 360 A/L)	1391
VKT 8012 (30310 J2/Q)	2750
Spherical roller bearing	
VKT 8008 (22212CC)	2350

Designation	MRP (₹)
Cylindrical roller bearing	
VKT 8010 (NJ 310 N)	1152
VKT 8064 (NU2209EMN)	830
VKT 8056 (NUP 310 NR)	1050
VKT 8051 (NUP 310 N)	1050
VKT 8060 (NU 309 E)	830

BB1 Series

Variant	Segment	Suitable For Vehicle Make	Suitable For Vehicle Model	Application	MRP
BB1-0016 A	PC & UV	Tata Motors/ Fiat Motors	Indica Vista/Manza /Fiat Punto /Linea	Gearbox C- 510 Fuat	272
BB1-0037 CE (6203 type)	PC & UV	Tata Motors Mahindra & Mahindra Ltd	Nano Mahindra Jeep	Bosch GCM1 Alternator Drive End Bearing	201
BB1-0078	PC & UV	Ford	Fiesta / Ikon	Spares /AVTEC Trans- mission	423
BB1-0097 (6201 type)	PC & UV	Tata Motors	Nano	Bosch GCM1 Alternator Drive End Bearing	151
BB1-0234 (6205 type)	PC & UV	Maruti Suzuki	Swift	Transmission	237
BB1-0372 AB (6202 type)	PC & UV	Hyundai Motors	Santro / Accent	Bosch Zelta Alternator Non Drive End Bearing	157
BB1-0372 BE	2W/3W SEG- MENT	India Yamaha Motor Pvt Ltd	Alpha Plus	Gear Primary Drive (Secondary Belt)	157
BB1-0382 (6202 type)	PC & UV	Bosch	Alternator	Lucas Starter Bearing	171
BB1-0390 A (6200 type)	2W/3W SEG- MENT	Hero Moto Corp	Passion	Clutch Cover Shaft	174
BB1-0420 A (6002 type)	PC & UV	Hyundai Motors	Santro / Accent	Bosch GCM 2 Rear Side Alternator	142
BB1-0434 (6303 type)	2W/3W SEG- MENT	OMR Bagla Automobiles	NA	Electric Motor	236
BB1-0434 A (6303 type)	2W/3W SEG- MENT	AUR. Motors Ltd	NA	Electric Motor	236
BB1-4724 B	2W/3W SEG- MENT	India Yamaha Motor Pvt Ltd	Alpha Plus	Transmission	215
BB1-0563 (6205 type)	PC & UV	Maruti Suzuki	Zen	BEHR Viscus Clutch System	271
BB1-0596 (62/22 type)	2W/3W SEG- MENT	Mahindra & Mahindra Piaggio Motors India Yamaha Motors Pvt Ltd	Alfa Ape RZ	Rear Axle/Crankshaft	226
BB1-0633 A (6303 type)	PC & UV	Bosch/ Auto Ignition	Zeta	Alternator	363
BB1-0697 A	2W/3W SEG- MENT	Honda	Unicorn 160 CC	Main Shaft	108
BB1-0877	PC & UV	Maruti Suzuki	EECO	REAR AXLE	498
BB1-3040 A (BB1-3040 type)	PC & UV	Tata Motors - India	Delphai TVS Pump	Lucas DPC Fuel Pump	444
BB1-3065 DC (BB1-3065 CE type)	PC & UV	Ford	Fiesta	Lucas TVS Alternator Drive End Bearing	313
BB1-3065 EA (6303 type)	PC & UV	Ford	Fiesta	Lucas TVS Alternator Drive End Bearing	313
BB1-3150 (6006)	2W/3W SEG- MENT	Hero Moto Corp	CBZ	Main Shaft RH	329

Variant	Segment	Suitable For Vehicle Make	Suitable For Vehicle Model	Application	MRP
BB1-3169 (6308/VE250 type)	CV & TRACTOR	Swaraj Mazda	T 3500	Main Shaft Bearing	896
BB1-3191/HN3 (BB1-3191 type)	CV & TRACTOR	John Deere	5103	Drive Shaft	496
BB1-3191	2W/3W SEG-MENT	Royal Enfield	Machismo	Transmission	496
BB1-3264 (6305 type)	PC & UV	Toyota		Transmission /Lucas TVS Alternator	903
BB1-3273 (6308 E type)	PC & UV	Toyota	Fortuner	Input Shaft Rear Side (R150 transmission)	1163
BB1-3273 A	PC & UV	Mahindra & Mahindra Ltd	Scorpio - New Model	Rear Axle	1069
BB1-3274	PC & UV	Toyota	Fortuner	Output Rr side, R150 transmission	499
BB1-3275 (6307 E type)	PC & UV	Toyota	Fortuner	Output Ct side, R150 transmission	1032
BB1-3284 (6206 type)	PC & UV	Maruti Suzuki	Zen	Steering Bearing	659
BB1-3358 (6213 type)	CV & TRACTOR	Tafe	MF 1035 DI, 30 DI - IDB Rear Axle(Dura Brake Models)	Rear Axle IDB Model	1718
BB1-3374 (6308/VE250 type)	PC & UV	Mahindra & Mahindra Ltd	Xylo / Scorpio	Rear Axle	602
BB1-3459 (6306 E type)	PC & UV	Mahindra & Mahindra Ltd	XUV 500 All Wheel Drive / Xylo	Transmission Input Shaft	523
BB1-4700 A (61804 type)	PC & UV	Maruti Suzuki	Alto / Wagon R	Steering	155
BB1-4701 (6302 type)	2W/3W SEG-MENT	Hero Moto Corp	Achiever/Hunk/CBZ	Transmission	375
BB1-4702 A (6302 type)	2W/3W SEG-MENT	Honda	Aciva / Deo	Crank case	239
BB1-4704 (6203 type)	2W/3W SEG-MENT	India Yamaha Motor Pvt Ltd	Crux/Libero/Alba/Gladiator	Crank Shaft	226
BB1-4705 AE	2W/3W SEG-MENT	India Yamaha Motor Pvt Ltd	Alpha Plus	CRANK SHAFT	338
BB1-4705 B (6305 E type)	2W/3W SEG-MENT	India Yamaha Motor Pvt Ltd	FZ 16	Crank Shaft	338
BB1-4712 (6004 type)	CV & TRACTOR	Tata Motors	Indica	Lucas Starter Bearing	208
BB1-4714 (6004 type)	2W/3W SEG-MENT	India Yamaha Motor Pvt Ltd	FX/R15	Transmission	189
BB1-4719	2W/3W SEG-MENT	India Yamaha Motor Pvt Ltd	FZ 16	Crank Shaft	362
BB1-4721 (6003 type)	2W/3W SEG-MENT	India Yamaha Motor Pvt Ltd	FX/R15	Transmission	170
BB1-4722 (6203 type)	2W/3W SEG-MENT	India Yamaha Motor Pvt Ltd	FX/R15	Transmission	170
BB1- 4728 (6206 type)	2W/3W SEG-MENT	LML	Supreme /Star /Select II/ Pulse	Engine	336

Variant	Segment	Suitable For Vehicle Make	Suitable For Vehicle Model	Application	MRP
BB1-4730	2W/3W SEG-MENT	India Yamaha Motor Pvt Ltd	Clutch lifter baring	Clutch Lifter Bearing	150
BB1-4751 C	2W/3W SEG-MENT	Honda	Unicorn 160 CC	Counter Shaft	183
BB1-4752 C	2W/3W SEG-MENT	Suzuki motorcycle India Pvt Ltd	New Access 125 CC	Crank Shaft	173
BB1-4753 C	2W/3W SEG-MENT	Suzuki motorcycle India Pvt Ltd	Gixxer	Engine	246
BB1-4758 E	2W/3W SEG-MENT	Honda	Unicorn 160 CC	Cam Shaft	129
BB1-4787 A	2W/3W SEG-MENT	Honda	Unicorn 160 CC	Balancer Shaft -Left And Right	109
BB1-4800	2W/3W SEG-MENT	India Yamaha Motor Pvt Ltd	Alpha Plus	Crank Front	317
BB1B 446740 CD	PC & UV	Mahindra & Mahindra Ltd	XUV 500	Intermediate shaft	577
BB1B 446740 CE	PC & UV	Mahindra & Mahindra Ltd	XUV 500	Drive Shaft	654
BB1B 630819 A (6304 type)	2W/3W SEG-MENT	Bajaj	Saffire	Crankshaft	329
BB1B 630819 A/ HN3 (6304 type)	2W/3W SEG-MENT	Bajaj	Safire	Crank shaft	329
BB1B 631046 B	PC & UV	Tata Motors / Fiat	Indica Vista/Manza /Fiat Punto /Linea	Main Shaft	428

Hub Bearings

Variant	Application	Suitable For Vehicle Make	Suitable For Vehicle Model	MRP
BAH-0013 D	Rear Wheel	Piaggio	Ape truck	1407
BAH-0036	Front Wheel	Tata Motors	Vista, Indigo, Manza	1138
		Ford India	Ikon	
BAH-0052	Front Wheel	Tata Motors	Indica	963
		Fiat India	Uno, Palio, Siena	
BAH-0052 C	Rear Wheel	Bajaj Auto	MEGA RE Diesel	1088
	Front Wheel	Mahindra &Mahindra	Maximo	
BAH-0087	Front Wheel	Maruti Suzuki	Maruti 800, Omni, Esteem, Zen (New)	842
BAH-0104	Front Wheel	Maruti Suzuki	Alto & WagonR (old models)	942
BAH-0109 B	Front Wheel	Ford India	Fiesta, Fusion, Ikon, Figo	1116
BAH-0179	Rear Wheel	Tata Motors	Indica, Indigo	1007
		Maruti Suzuki	Marina, Vista, Manza RitZ	
BAH-0221	Front Wheel	Maruti Suzuki	Alto K10, WagonR, Zen Estilo, A-Star (New Models)	747
BAH-0229	Front Wheel	Maruti Suzuki	Swift, Swift Dzire, Ritz, Ciaz	1055
BAH-0230	Front Wheel	Maruti Suzuki	Swift, Swift Dzire	963
	Non ABS,	Piaggio	FW Non ABS	
	Rear Wheel		Piaggio Porter RW	
BAH-0259 A	Front Wheel	Tata Motors	Zest, Bolt	1305
BAH-0261	Front Wheel	Mahindra &Mahindra	Verito, Vibe, Logan	1474
	Non ABS	Nissan Renault	Sunny, Pulse. Micra	
BAH-0263	Front Wheel ABS	Mahindra &Mahindra	Verito, Vibe, KUV 100	1474
BAH-0265	Front Wheel	Renault India Limited	KWID	761
BAH-0275	Rear Wheel	Maruti Suzuki	Swift, Swift Dzire,	1191
BAH-0278	Rear Wheel	Maruti Suzuki	Alto, A Star, Wagon R, Estilo	1049
BAHB-636193 C	Front Wheel	Hyundai Motors	Santro, Accent, Getz, i10, i20	1191
BAHB-636149 CC	Front Wheel ABS	Maruti Suzuki	Ertiga, SX4	1500
BAHB-636149 CD	Front Wheel	Maruti Suzuki	Ertiga, SX4	1310
	Non ABS,	Tata Motors	Tata Winger	

Taper HUB Bearing

Variant	Application	Suitable For Vehicle Make	Suitable For Vehicle Model	MRP
BTH-1024 AE	Front Wheel	Mahindra &Mahindra	Xylo, Scorpio	1889
BTH-1206 AB	Rear Wheel	Ford India	Fiesta, Fusion, Figo	2085
BTH-1238	Rear Wheel	Tata Motors	Ace Pickup, Iris	1456
VKBC 1008 (BTHB 329129 DE)	Rear Wheel	Tata Motors	Xenon, 207 DI (New Model)	2038
BTH-1256	Front Wheel	Toyota Motors	Innova	1902
BTH-1265 A	Front Wheel	Mahindra &Mahindra	TUV 300	1956

Imported HUB Units

Variant	Application	Suitable For Vehicle Make	Suitable For Vehicle Model	MRP
VKBC 0968	Front Wheel	Toyota	Corolla E1, Altis	2121
VKBC 0969	Front Wheel	Toyota	Camry	3131
VKBC 0970	Front Wheel	Honda	Accord	3131
VKBC 0971	Front Wheel	Mitsubishi	Lancer	1717
VKBC 0979	Front Wheel	Skoda	Octavia	1768
VKBC 0980	Front Wheel	Skoda	Fabia	5303
VKBC 0981	Front Wheel	Skoda	Laura	4798
VKBC 0993	Rear Wheel	Hyundai Motors	Accent ABS	3434
VKBC 0994	Rear Wheel	Hyundai Motors	Accent Non ABS	3131
VKBC 0995	Rear Wheel	Hyundai Motors	Santro Non ABS	3030
VKBC 0996	Rear Wheel	Hyundai Motors	Santro ABS	3384
VKBC 0997	Rear Wheel	Hyundai Motors	i10, i20, Getz, OLD Verna, Grand i10 Non ABS	4293
VKBC 0998	Rear Wheel	Hyundai Motors	i10, i20, Getz, OLD Verna, Grand i10 ABS	5303
VKBC 0999	Rear Wheel	Hyundai Motors	Verna Fluidic ABS	5050



SKF premium grease



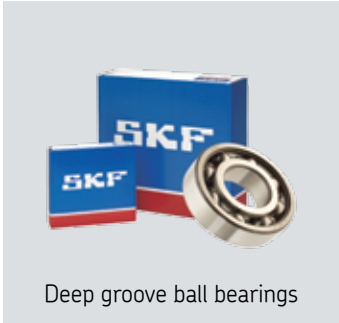
Seals



Hub bearing units



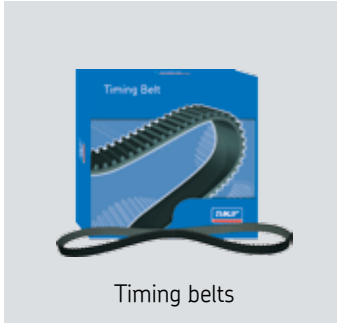
Centre support bearings



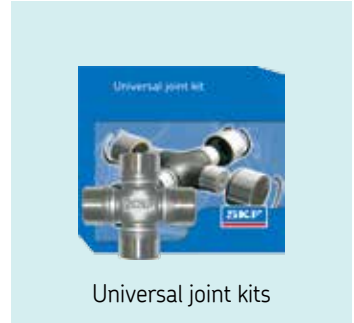
Deep groove ball bearings



Taper roller bearings



Timing belts



Universal joint kits

This edition of Maximum Retail price of SKF products are as on 1st April 2018. For latest information please contact your nearest Automotive Distributor. (Please visit our website to locate a distributor near you.) M.R.P. given in this list are recommended prices, retailers/distributors are free to sell below the M.R.P.

Prices are subject to change without prior notice.

The contents of this publication are the copyright of the publisher and must not be reproduced (even extracts) unless permission is granted. Every care has been taken to ensure the accuracy of the information contained in this publication but no liability for any loss or damage whether direct, indirect or consequential arising out of the use of the information contained herein.

Install confidence, install SKF!

Vehicle Service Market
SKF India Limited
Chinchwad, Pune 411 033 India
Tel: +91-20-6611 2500
CIN: L29130MH1961PLC011980

skf.com | skfindia.com

To know more about SKF VSM's complete range of products: "Download our free app from google play and ios app store" just search for "vsm skf india parts"



© SKF is a registered trademark of the SKF Group.

© SKF Group 2018
The contents of this publication are the copyright of the publisher and may not be reproduced (even extracts) unless prior written permission is granted. Every care has been taken to ensure the accuracy of the information contained in this publication but no liability can be accepted for any loss or damage whether direct, indirect or consequential arising out of the use of the information contained herein.